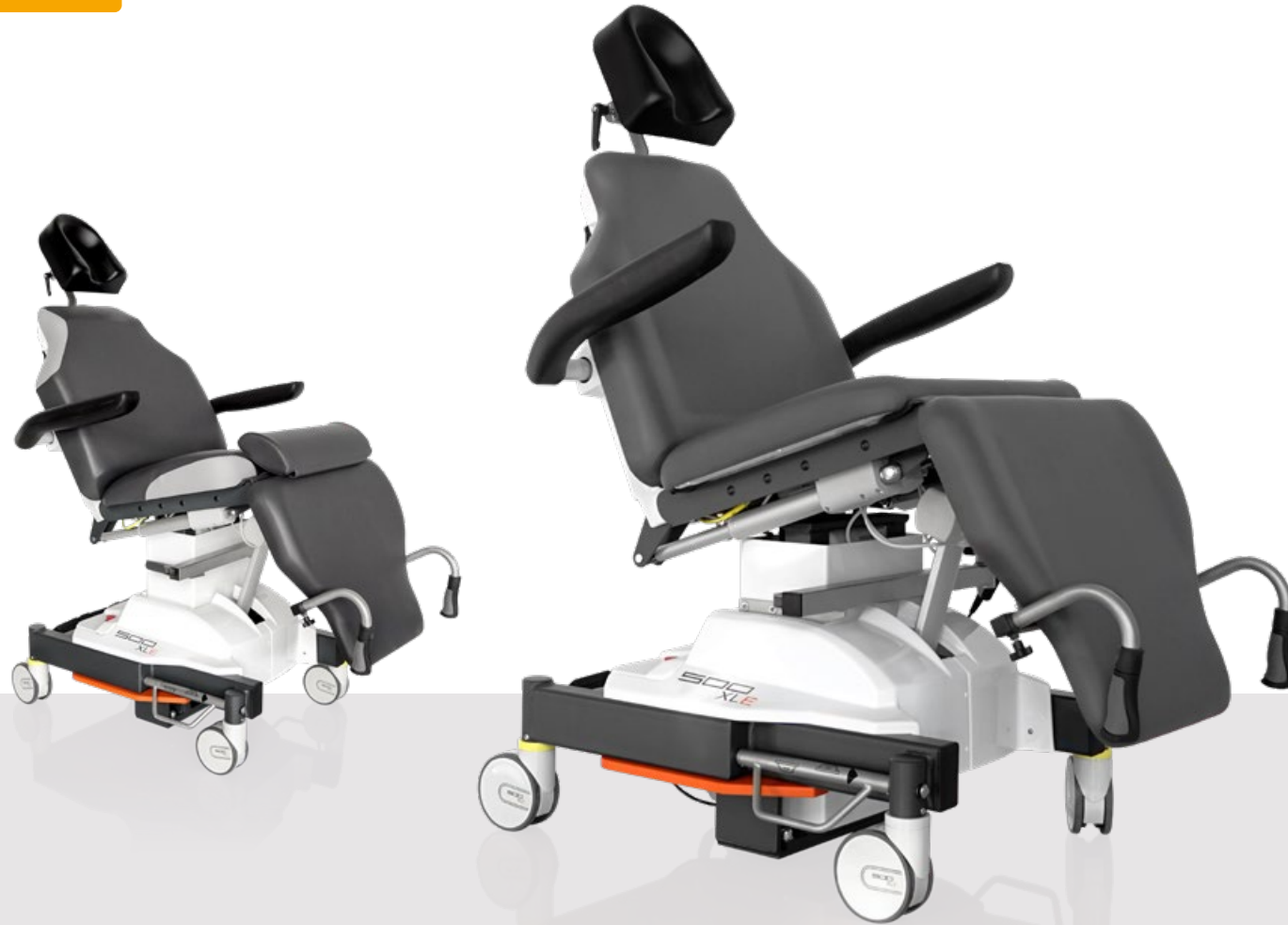




PRODUCT GUIDE 2026



TREATMENT CHAIR

500 XLE

performanceLine

Treatment chairs

performanceLine

Our classic

It represents proven and time-tested technology in a modern design, it is deliberately low-tech, and it offers an extremely attractive price-performance ratio.

Its chief benefits include space-saving design and outstanding maneuverability coupled with a lean range of easy-to-manage functions.

Do you want flexible use in confined spaces with power-supply independent battery operation?

Then you should go for our classic: The **500 XLE** or **500 XLE comfort**, for optimal combination with our **surgiLine** and **surgiTrend** surgeon's chairs.

performanceLine systems are designed for user satisfaction

Designed for continuous use in serially equipped operating rooms with high patient turnover, the *performanceLine* satisfies every user thanks to its easy handling before, during and after the surgery.



An award-winning "Preventive Technology", the *performanceLine* works hard to protect your surgical staff from back problems, thanks to its lightweight construction and easy maneuverability.

**Less is more -
more benefits**

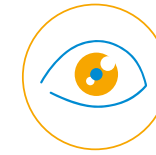
500 XLE comfort

Item No.: 1500 0006
+ 3037 0080



500 XLE

Item No.: 1500 0006



Ophthalmic surgery



Dental surgery
Implantology
Oral surgery



ENT surgery

500 XLE



Item No.: 1500 0006

The perfect reclining treatment chair for rotation systems in outpatient operating rooms.

**Powerful
and agile**



MED.TEC at its highest level

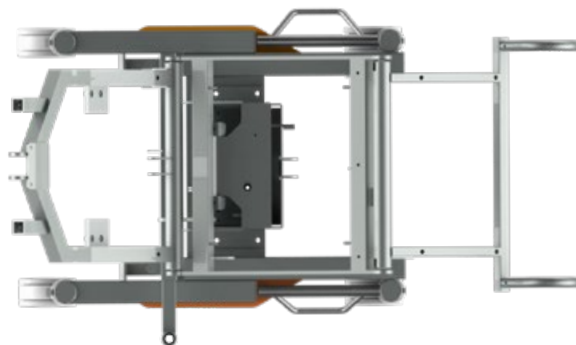
Double castors

Four fully rotating double-run castors for back-friendly, easy rolling motion.



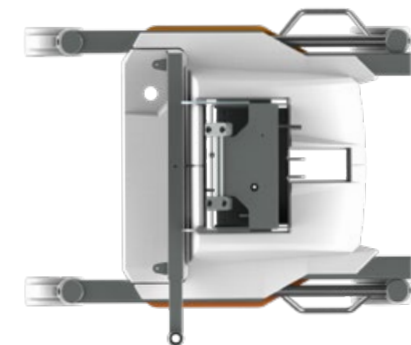
Chassis/frame

Precision steel frame chassis, zinc primed with anthracite textured paint coating.



Chassis cover/upholstery

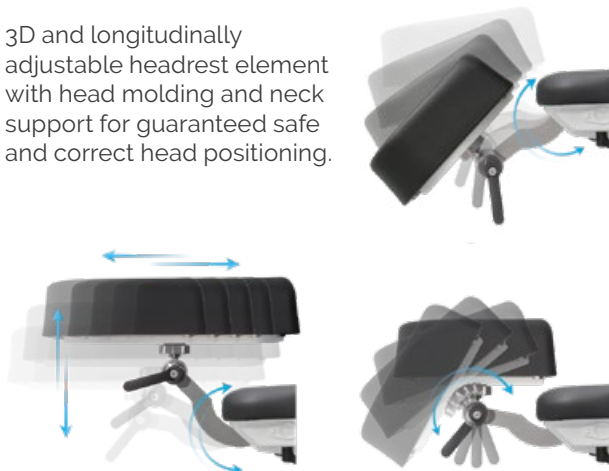
The mirror-finish plastic cover panels with their scratch-resistant and impact-modified surface finish are extremely hygienic and easy to disinfect.



Precise positioning of the head part

Headrest

3D and longitudinally adjustable headrest element with head molding and neck support for guaranteed safe and correct head positioning.



Components

Headrest with ball joint and more

Discover additional features and extensive components on page 34.

Item No.: 3351 1021



Sterile adjustment by surgeon/maximum legroom



Flexible reaction by foot control

Removable foot keypad for infinite electronic height and head adjustment including reactivation button from the stand-by mode.



Positioning

The 500 XLE treatment chair is designed for ergonomic and comfortable patient positioning and treatment, particularly for outpatient surgical techniques. It offers versatile adjustment of the head, back, seat and leg sections and overall chair height for patient transport.

- Eight freely programmable memory positions
- CPR button
- Reset button
- Auto run function
- Battery charge indicator




Hand control


Multi-functional manual keypad

 Battery charge indicator

 Reset button

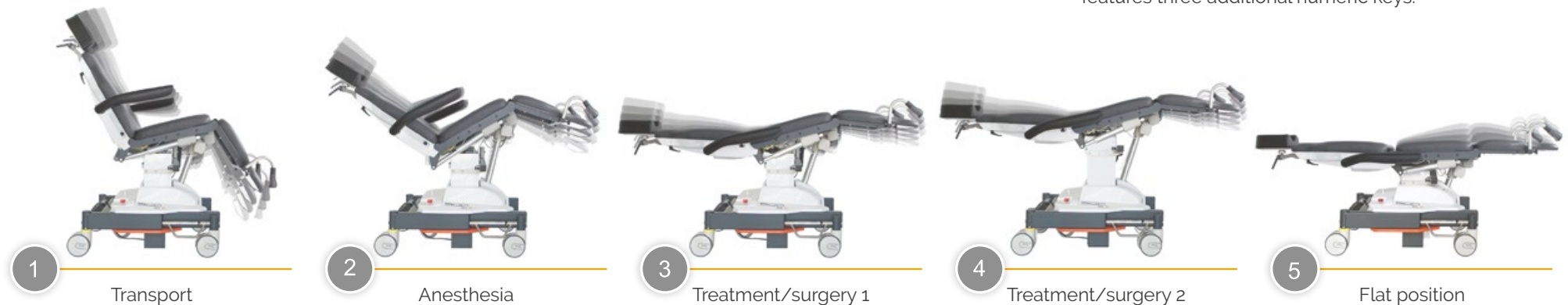
 CPR button

 Auto run function

 8 free configurable memory positions

Positioning by hand control

Standard recommended memo keys



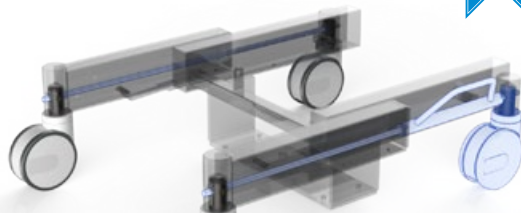
For additional desired memory positions, the system features three additional numeric keys.

Mechanical maneuvering aid “Steering-Guide” on the chassis



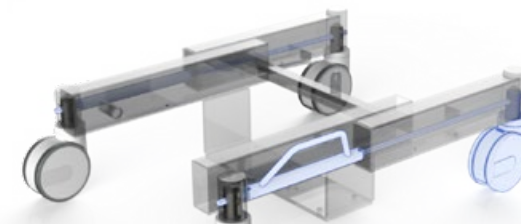
Operation via foot lever on the chassis

Activation of steering guidance



Pushing from the head direction

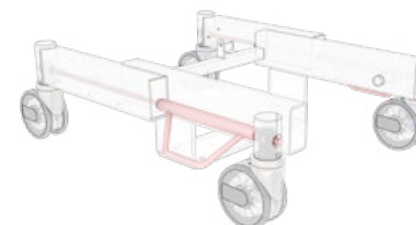
Pushing from the foot direction



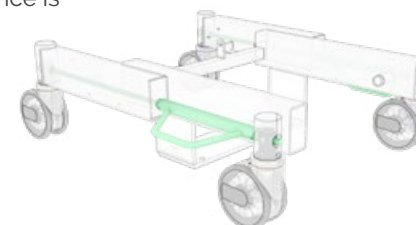
Braking system

Manually adjustable foot lever

Castors are braked



Castors are released, steering guidance is deactivated



Push handles

Detachable push handles on the foot ends for easy maneuvering.



Armrests

Hinged and removeable armrests for easy entry and exit as well as transfer of the patient.



Components

Additional handles/shoulder parts and more

Discover additional features and extensive components on page 34.



500 XLE comfort



Item No.: 1500 0006
+ 3037 0080

Our 500 XLE with extra thick upholstery, integrated knee support cushion and flattened neck area - for extra reclining comfort.

**Outstanding comfort,
particular flexibility.**



Upholstery

Comfort

Thick comfort upholstery and integrated knee support cushion, individually positionable to suit every patient's body height. The treatment chair featuring comfort upholstery is particularly well suited for longer surgical procedures (e.g. retina surgery).



Available in a wide variety of colors. Please refer to page 100 for our complete range of colors.



Flexibility in every detail

Headrest

The flattened back cushion of the Comfort upholstery in the neck area offers maximum freedom of movement for the headrest. The headrest allows for horizontal adjustment of 145 mm for optimal length adjustment.



Integrated knee support cushion

Optimum patient comfort thanks to the integrated knee support cushion which can be easily adjusted to accommodate any patient height.



An optional legrest extension can be attached when treating tall or very tall patients.



Components

Foot part extension

Adjustable foot part extension incl. foot support for easier entry and exit of the patient. See page 34.

Besides, entry height is reduced by 80 mm.

Item No.: 3351 1028



Technical specifications

Chassis

- Frame profile 90 x 50 mm
- Outside length 785 mm
- Outside width incl. lever 720 mm
- Steel tube frame, powder-coated elegant anthracite matte finish
- Brake operable from both sides and acting on two castors each; two castors featuring independent directional steering function
- Double rimmed castors \varnothing 125 mm
- Detachable foot keypad (total, head up/down)
- Emergency stop button
- Visible screws are made of stainless steel
- With equipotential bonding connection

Upper frame

- 4-part support frame (head, back, seat, leg part)
 - Removeable upholstery
 - Width of upholstery 610 mm
 - Width incl. armrests 850 mm
 - Length 1.760 – 1.900 mm
(incl. legrest extension) + 190 mm
- | | Angle | Dimensions (L x W) |
|------------------------------------|----------------------------|---|
| • Head part | -29°/+35° | 255 x 245 mm |
| • Back part | 0°/+83° | 610 x 610 mm |
| • Seat part | -5°/+35° | 450 x 610 mm |
| • Leg part | 0°/-77° | 510 x 610 mm |
| • Height adjustment | | 625 – 925 mm (comfort) 655 – 955 mm |
| • Armrests | 0°/+180° | (2 x) 470 x 75 mm |
| • Entry height (in reset position) | | 580 mm (standard)/500 mm (incl. legrest extension) 610 mm (comfort)/530 mm (incl. legrest extension) |
| • Legroom | | 520 – 820 mm |
| • Trendelenburg | -12°/Reverse Trendelenburg | +5° |

Electrical control

- All components according to IP54
- Hand control with 8 individually programmable memory positions, auto run function, reset button
- Foot keypad with 4 foot switches and reactivation button

Electric Drives

- Head, back, seat, leg part, total up/down
- Trendelenburg/Reverse Trendelenburg

Lifting column

- Max. lifting 300 mm
- Max. load 250 kg
- Motors IP54 with HAL sensors, to be memorized

Trendelenburg/Reverse Trendelenburg/CPR



Back part/leg part



Height adjustment



Specifications in mm

Components



500 XLE

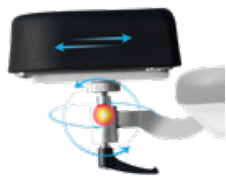
Item No.: 1500 0006



500 XLE comfort

Comfort upholstery incl. integrated knee roll, upcharge

Item No.: 1500 0006 + 3037 0080



Headrest with ball joint, 360° all-round adjustment, factory-fitted

Item No.: 3351 1021



Backup battery

Item No.: 3047 0000



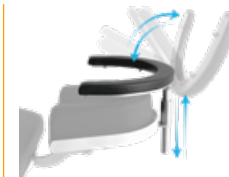
Head part bumper stainless steel

Item No.: 3028 0000



Wrist rest, adjustable, incl. mounting plate 3013 0000, adjustment 115 mm

Item No.: 3014 0000



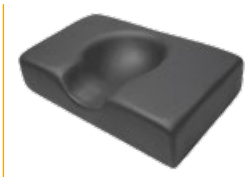
Wrist rest, adjustable, tiltable, incl. mounting plate 3013 0000, adjustment 115 mm

Item No.: 3014 0005



Mounting plate stainless steel, for wrist rest 3014 0000 and 3014 0005

Item No.: 3013 0000



Head fixation pillow with hollow (rubins pillow), 410x250 mm, height 100 mm, factory-fitted

Item No.: 3022 0000



Side parts right and left, swiveling incl. locking, upholstered, 580x200 mm

Item No.: 3351 0012



Norm rail seat part

Item No.: 3351 0047



Side parts right and left, 580x200 mm, incl. quick-release clamp for mounting on norm rail (norm rail 3351 0047 not included)

Item No.: 3351 0050



Pushing handles back part, pair

Item No.: 3351 0046



Pushing handles back part, pair

Item No.: 3351 0017



Anesthesia arm board with universal joint, with arm secure straps

Item No.: 3351 0011



Flexible surgical drape support rod

Item No.: 3205 0000



Flexible surgical drape support rod with air connection

Item No.: 3206 0000



Hand control holder, PVC (component holder 3351 0037 not included)

Item No.: 3351 1023



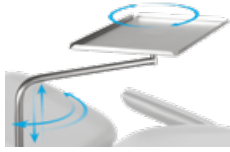
Hand control holder for attachment onto an I.V. Pole Ø 25/18 mm, PVC

Item No.: 3351 1022



Facial pillow, horseshoe-shaped, incl. adapter plate, factory-fitted

Item No.: 3351 1016



Instrument table 500x300x15 mm, height adjustable, swiveling, detachable, incl. adapter (component holder 3351 0037 not included)

Item No.: 3065 0000



Shoulder parts right and left 500 **XLE**
Item No.: 3071 0000

500 **XLE** comfort
Item No.: 3071 0001



Knee half roll, 600x280x140 mm, PUD-coated

Item No.: 3019 0000



Knee roll round, 500x150 mm, PUD-coated

Item No.: 3050 0000

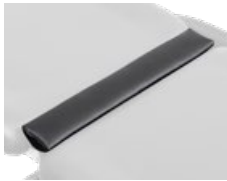


Medical device



Instrument table *supportLine* height adjustable 735-1,000 mm

Item No.: 3351 0026



500 **XLE**
Trapeze cushion, wedge, for back/seat part

Item No.: 3351 1052



500 **XLE** comfort
Trapeze cushion, wedge, for back/seat part

Item No.: 3022 0005



Wrist secure straps, pair

Item No.: 3015 0000



Body strap with Velcro straps, 2-piece

Item No.: 3083 0000



Foot part extension incl. foot support, factory-fitted, upcharge

Item No.: 3351 1028



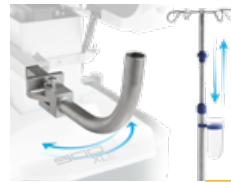
Foot protection foil

Item No.: 3092 0001



IV. Pole stainless steel Ø 25/18 mm, one-hand height adjustable 1,070-1,660 mm, 4 hooks, max. 2 kg/hook, glass and holder (component holder 3351 0037 not included)

Item No.: 3068 0000



Component arm stainless steel, swiveling, incl. extendible IV. Pole Ø 25 mm

Item No.: 3024 0014



Component holder, stainless steel

Item No.: 3351 0037



Cylinder holder

Item No.: 3072 0002



UNIVERSITÄTSKLINIKUM ESSEN (Essen, DE)

performanceLine

Color card

skai® Tundra



High quality skai® material with fine calf leather grain and subdued matte-gloss-effect. The very extensive and trend-orientated color spectrum enables many applications and combinations.

Product Specification

- Long-lasting
- Tear resistant
- Easy to clean
- Abrasion resistant (DIN EN ISO 5470-2)
- Lightfast
- Disinfectant resistant
- Biocompatibility: cytotoxicity (EN ISO 10 993-5) and epicutaneous test (EN ISO 10 993-10)
- Blood- and urine resistant
- Phthalate-free
- Vegan

| | |
|-------------------------|-----------------------|
| <i>eyeForce</i> | 1800 0000 |
| <i>500 XLE</i> | 1500 0006 |
| <i>500 XLE comfort</i> | 1500 0006 |
| | + 3037 0080 |
| <i>500 XLS</i> | 1500 0005 |
| <i>500 ECO</i> | 1500 0008 |
| <i>400 XL</i> | 1400 0001 |
| <i>surgiForce</i> | Formed seat 2600 0008 |
| <i>surgiForce light</i> | Formed seat 2600 0009 |
| <i>surgiLine</i> | Formed seat 2200 0008 |
| <i>assistLine</i> | 2400 0015 |
| <i>motionLine</i> | 1700 0000 |

+ Item No.: 3037 0...

| | | | | | | | |
|--|--|---|---|--|---------------------------------------|--|---------------------------------------|
| | | | | | | | |
| weiß F6461198 Item No.:134 | creme F6461210 Item No.:057 | beige F6461636 Item No.:094 | sand F6461230 Item No.:058 | pistazio F6461610 Item No.:153 | mint F6461495 Item No.:067 | aqua F6461456 Item No.:001 | türkis F6461338 Item No.:008 |
| | | | | | | | |
| perle F6461288 Item No.:007 | silber F6461550 Item No.:070 | stone F6461608 Item No.:075 | bleu F6461496 Item No.:068 | dolphin F6461609 Item No.:076 | sky F6461581 Item No.:073 | royal F6461196 Item No.:051 | atoll F6461453 Item No.:062 |
| | | | | | | | |
| violett F6461356 Item No.:059 | cyclame F6461381 Item No.:119 | orchidee F6461354 Item No.:011 | bordeaux F6461350 Item No.:010 | kirsche F6461199 Item No.:054 | feuer F6461454 Item No.:063 | karneol F6461557 Item No.:072 | orange F6461556 Item No.:071 |
| | | | | | | | |
| apricot F6461458 Item No.:066 | mais F6461457 Item No.:065 | mango F6461607 Item No.:074 | safran F6461542 Item No.:069 | limonade F6461343 Item No.:009 | limone F6461543 Item No.:109 | smaragd F6461455 Item No.:064 | agave F6461273 Item No.:006 |
| | | | | | | | |
| chrom F6461205 Item No.:056 | ocean F6461204 Item No.:055 | schoko F6461357 Item No.:060 | schwarz F6461195 Item No.:050 | anthrazit F6461197 Item No.:052 | | | |

The colors displayed on your device may differ slightly from the original colors. If you wish to receive original color charts, please contact us at info@ufsk-osys.com.

Upgrade your OR to perfection.



eyeForce



500 XLE



500 XLE comfort



500 XLS



500 ECO



400 XL



motionLine



surgiForce



surgiForce light



surgiTrend



surgiLine



stayClean



stayClean roll



stayClean kick bucket



stayClean collector



assistTrend



assistPro F



assistPro H



easyPro F



easyLine F



easyLine R



assistLine



supportLine

CONTACT US



UFSK
INTERNATIONAL

OSYS

UFSK-International OSYS GmbH
Kirchhoffstraße 1
93055 Regensburg
Germany

Tel. +49 (0) 941 78862 15
Fax +49 (0) 941 78862 35
E-Mail info@ufsk-osys.com
Web ufsk-osys.com

MADE IN GERMANY
Design | Construction | Manufacturing